



'Capability assessment' in Thesprotia: the case of new Igoumenitsa seaport

Thematic seminar South-Holland South February 2011

Giorgos Lichnos

1



Igoumenitsa New Seaport, Some Facts

- Just 90 nautical miles from Otranto , Italy
- Strategically located and benefited from big infrastructures in Western Greece
(Egnatia Odos, Airports of Aktion and Corfu, Preveza-Aktion linkage)
- Total surface of 230 acres of which 130 acres port area, while the other 80 acres serve road network, parking area of vehicles and trucks, refueling facilities
- Capacity of simultaneous service of 7 ships
- 12 mooring positions
- The old port is nowadays used as a facility for the housing of Port Authority and its vessels.



Igoumenitsa New Seaport, Overview



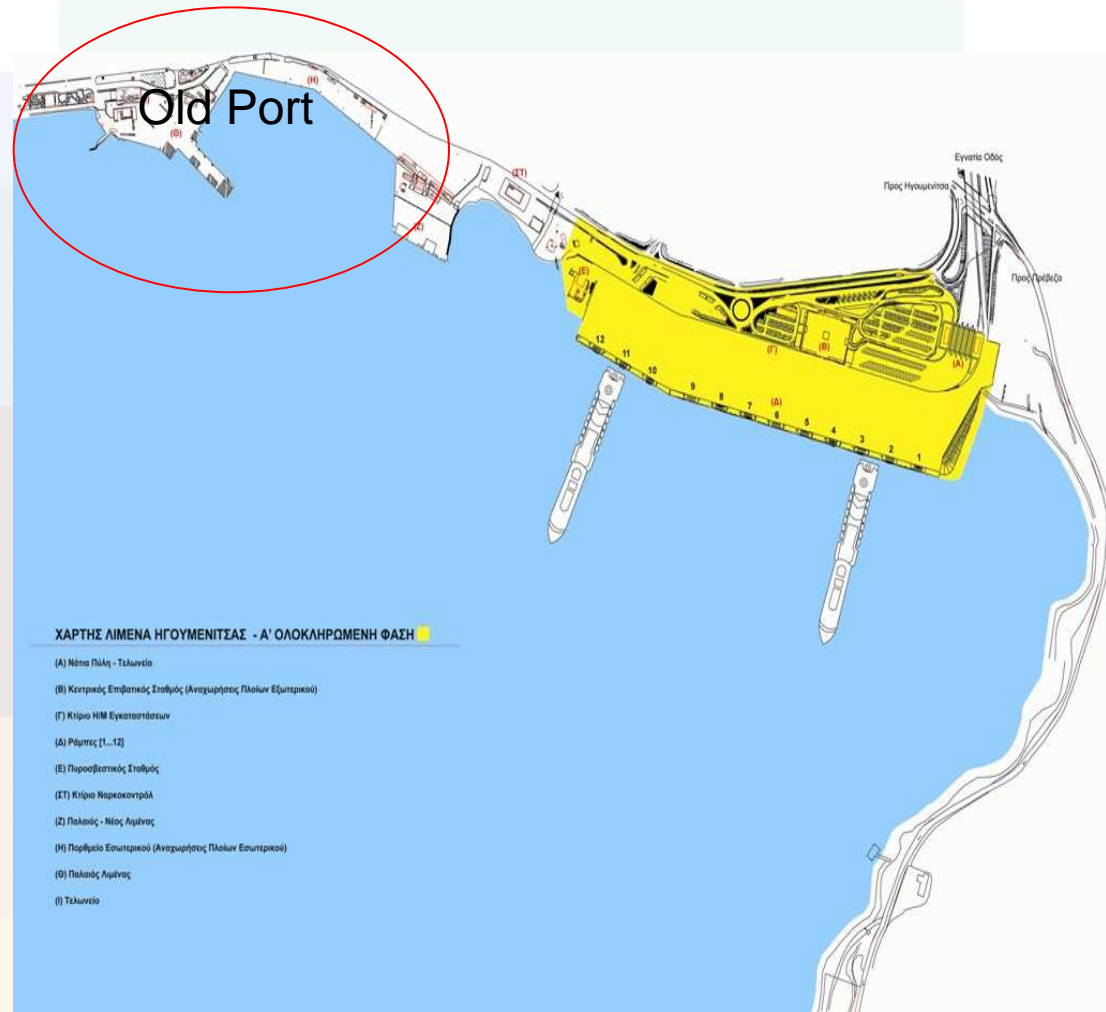
Igoumenitsa New Seaport, Development Phases

Phase A (Completed)

- Creation of seaport platform
- Development of new land area of 210.000 sq. m total surface
- Passenger Terminal of 6323 sq m



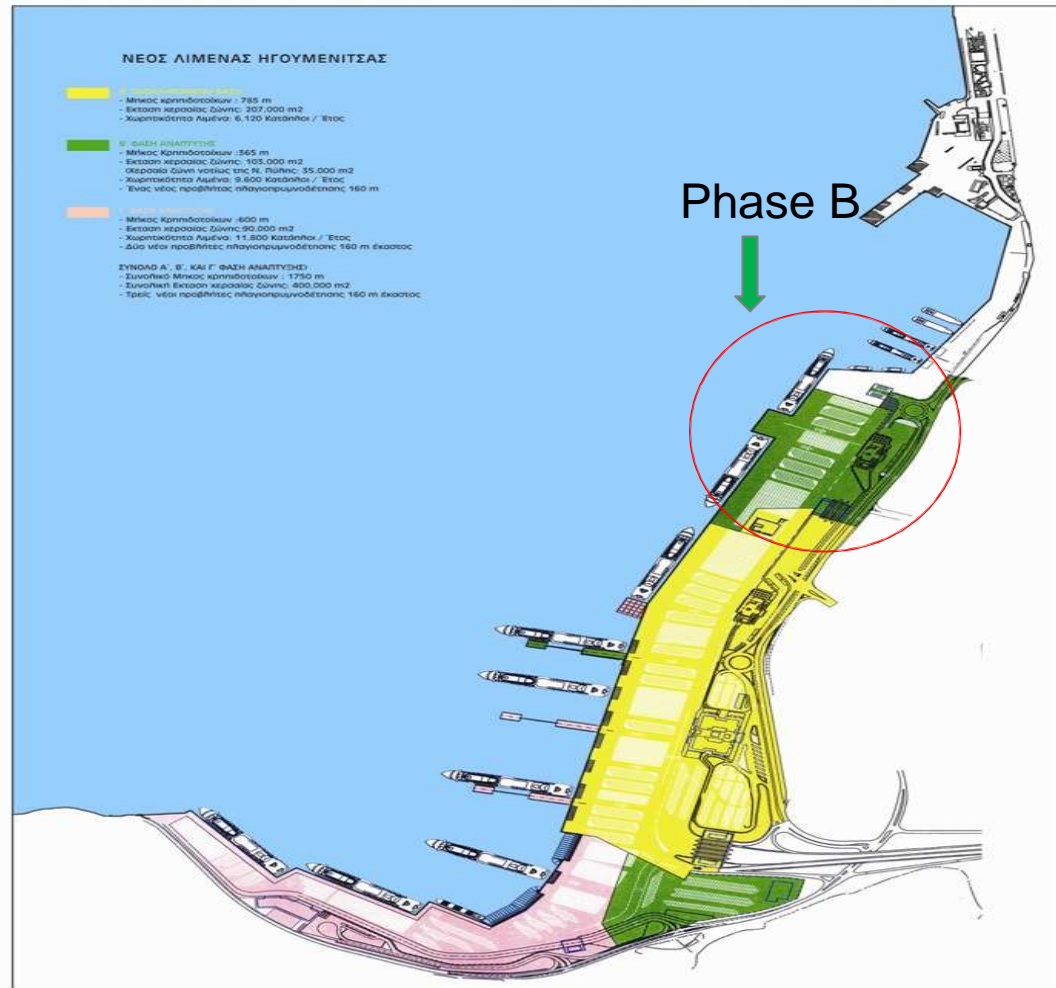
- Central Gate with direct Connection to Egnatia
- Facilities building, water and fuel tanks, generator
- Fire Station



Igoumenitsa New Seaport, Development Phases

Phase B (Under construction-to be completed 2011)

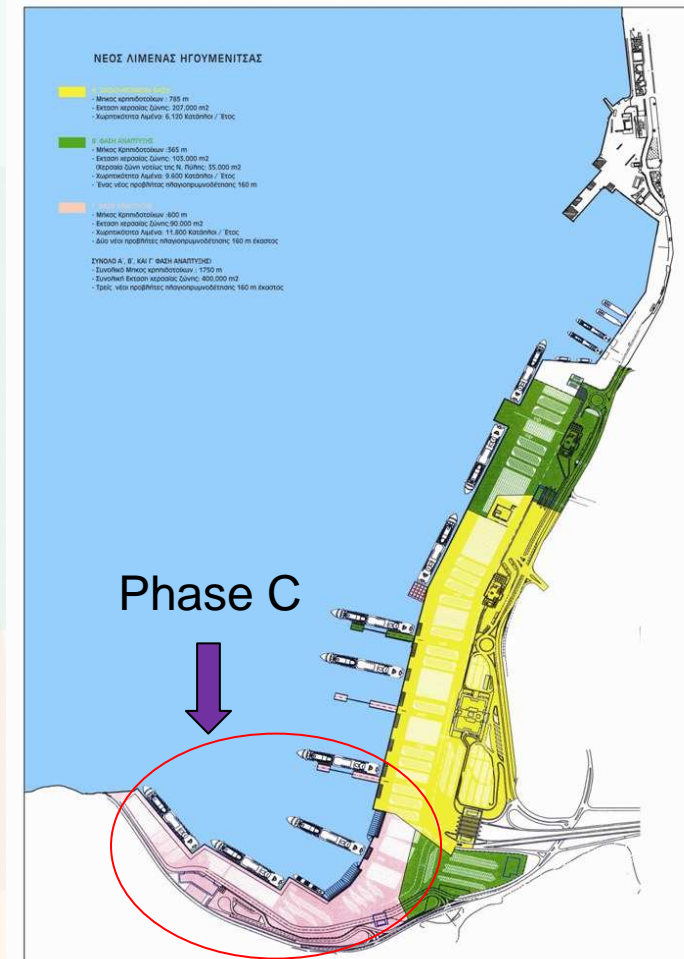
- Budget of 66.2 mil euros
- Basic objective: To connect the old port with Phase A of new port
- Safer and quicker approach of ships at the port at the port
- Construction of Finger Pier for the alongside mooring of ships.



Phase C (Provisioned)

- After its completion the port will allow freight and container services.

| Construction Works | Phase A | Phase B | Phase C | Overall |
|--------------------|--------------------|--------------------|----------------------|----------------------|
| Length of quays | 785 m | 365 m | 600 m | 1750 m |
| Land area zone | 207.000 sq. m | 103.000 sq. m | 90.000 sq.m | 400.000 Sq.m |
| Port capacity | 6120 sailings/year | 9600 sailings/year | 11.800 sailings/year | 11.800 sailings/year |

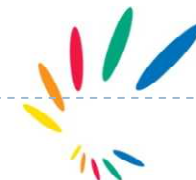




Igoumenitsa New Seaport , Safety Issues (1)

A) ISPS CODE

- New Igoumenitsa Port shall be fully aligned with the International Ship and Port Facility Security (ISPS) Code concerning safety measures of the port.
- ISPS code shall be implemented primarily in international passenger ships and cargo ships of more than 500 tones.
- The port authority already ordered a study of a Safety Plan of port facilities (S.A.L.E) and a Safety Assessment of port facilities. Both studies have been approved by the Ministry of Shipping.
- For ISPS to be fully operational, the implementation of S.A.L.E should be followed.





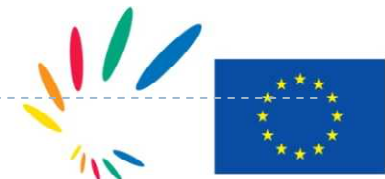
Igoumenitsa New Seaport , Safety Issues (2)

B) Technological and environmental risks

- No cargo traffic at the moment so no containers and related risks.
- A contingency plan is under way to make an assessment of risks associated with freight container traffic associated with Phase C.
- It is also not known whether containers shall transport hazardous material.
- No vulnerable buildings in the area.
- No substantial population density in the area. (Pending the census of 2011).
- Possibility of an accident limited due to good infrastructure and available space.

C) Other risks

- Drugs Trafficking
- Illegal immigration
- Metal theft

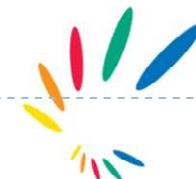




Igoumenitsa New Seaport , Safety Issues (3)

D) Capacities

- Fire station inside the port , 612 sq m with a hackstand of 224 sq m for parking of fire trucks, 2 fire trucks available
- Fire boat
- Fire hydrants along the whole surface of the port.
- Facilities building, water and fuel tanks, electricity generator
- Port police
- Cameras in selected spots
- Immediate access to Egnatia Odos through South (Central) Gate. Ten gates for entrance to the port supervised by four vehicle checkpoints.
- Awareness training programs about safety issues from the Port Authority of Igoumenitsa.



Igoumenitsa New Seaport, Pier view



Igoumenitsa New Seaport, Passenger Terminal





THANK YOU FOR YOUR KIND ATTENTION!

Giorgos Lichnos
symv@thesprotia.gr

