



'Capability assessment' in Mirandela

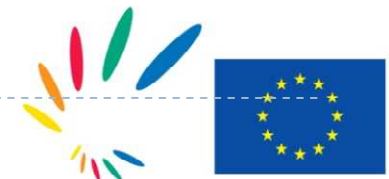
Thematic seminar South-Holland South February 2011





1. Do you have past experience with researching the possible risk measures (by means of a capability assessment)?

- The Municipal Emergency Plan was reviewed in 2009
- This revision included capability assessment: there were identified “capacities and resources available to reduce the identified levels of risk, or the^[1] possible effects of a disaster.” (draft EU-guideline)

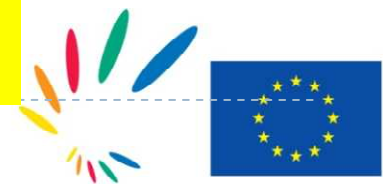




1. Can you give examples of (types of) risks for which a capability assessment has been made?

- Capability assessment was made for several types of risks:

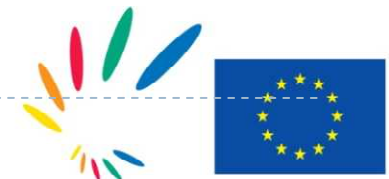
		Probability					
		Confirmed	High	Medium-high	Medium	Medium-low	Low
Impact	Critical	Forest Fires Floods					
	Marked	Urban Fire Droughts					
	Moderate		Heat waves	Landslides	Strong winds		
	Reduced	Seismic			Cold waves		
	Residual						





2. Which kinds of capabilities were identified?
3. Did you make a generic list of capabilities for specific risks?

- The municipal emergency plan is a generic plan that covers all risks, so the list of capabilities has not been prepared for a specific risk
- There is the possibility to make specific emergency plans for specific risks and the Municipality of Mirandela must prepare two: one for the forest fire risk and another for the flood risk



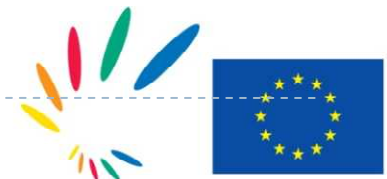


4. Did these capabilities only concern risk management or also disaster response and recovery?
5. Did these capabilities concern impact, probability and/or vulnerability?

- The capabilities concern risk management, disaster response and recovery and also impact, probability and vulnerability:

- **About risk management:**

- Risk awareness of inhabitants and civil protection agents
- Some infrastructures are replaced to safety areas
- Apply the law related to new constructions and measures to avoid forest fires
- Separate the industrial zone of residential area
- Build recreational areas along the river margins





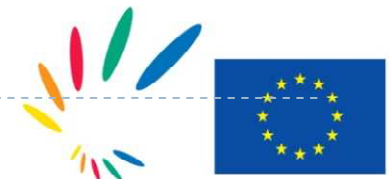
4. Did these capabilities only concern risk management or also disaster response and recovery?
5. Did these capabilities concern impact, probability and/or vulnerability?

- **About risk management (cont.):**

- Identify of all civil protection structures and means in a map
- Produce hazard, vulnerability and risk maps

- **About disaster preparedness and response:**

- The municipal emergency plan is activated and all the institutions involved prepare itself to respond
- There is a list of means (human and materials) of all institutions involved
- There is a line of command and control defined by a civil protection national law





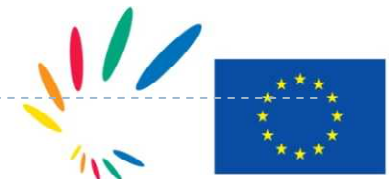
- 4. Did these capabilities only concern risk management or also disaster response and recovery?
- 5. Did these capabilities concern impact, probability and/or vulnerability?

•About disaster preparedness and response (cont.):

- The civil protection agents have a radio communication system
- It is established that the press is informed about the evolution of the situation

•About recovery:

- Solutions are asked to scientific and technical institutes
- Companies must put in order the access to electricity power, gas, water, roads, etc.

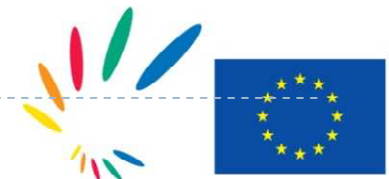




- 4. Did these capabilities only concern risk management or also disaster response and recovery?
- 5. Did these capabilities concern impact, probability and/or vulnerability?

- **About recovery (cont.):**

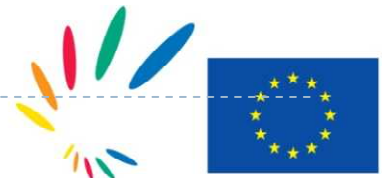
- Medical staff make proposals to avoid diseases and helps people with psychological problems
- Warnings and measures of self protection are spread through radion station





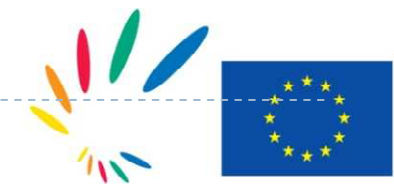
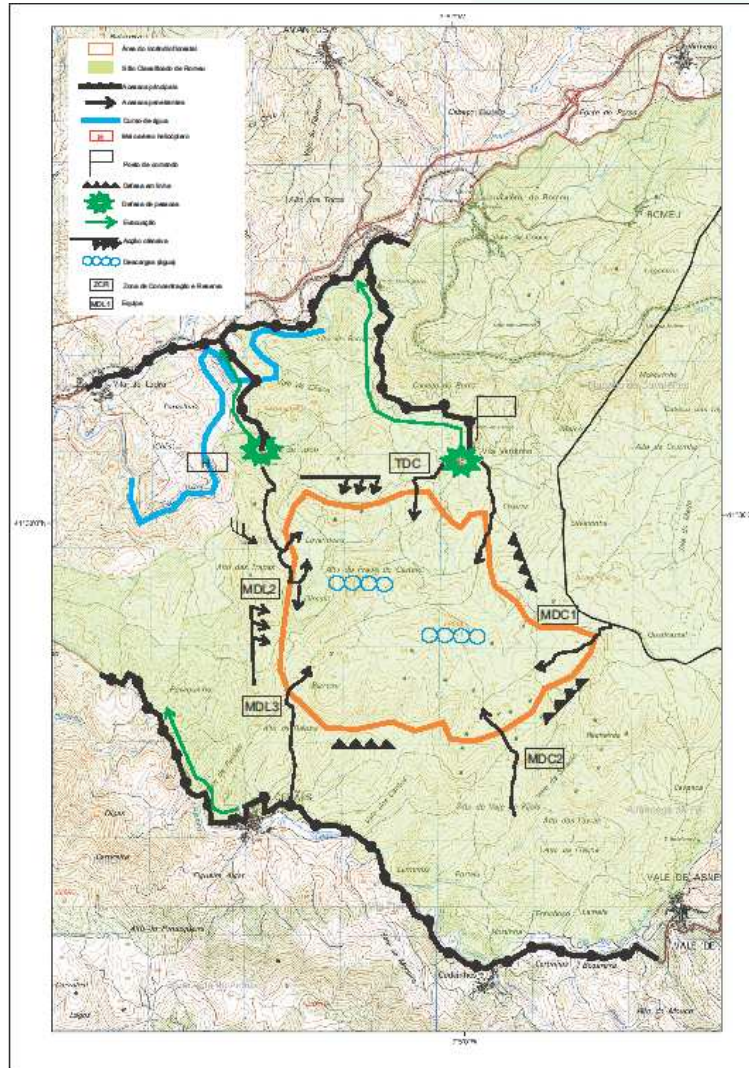
6. Which instruments did you use to identify capabilities/risk measures?

- The Municipal Emergency Plan contains three different scenarios (taking into account the main risks):
 - Forest fire in the Rede Natura 2000 area
 - Flood in the camping site
 - Urban fire in several buildings in the historical area of the city of Mirandela



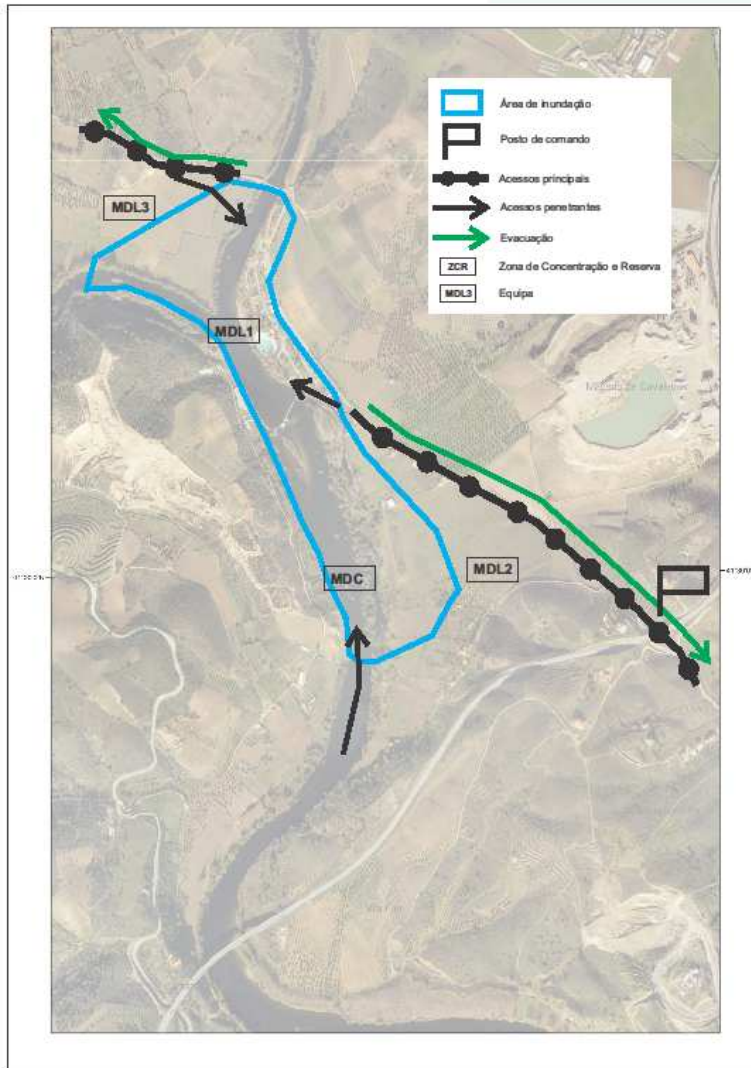
6. Which instruments did you use to identify capabilities/risk measures?

- Forest fire in the Rede Natura 2000 area



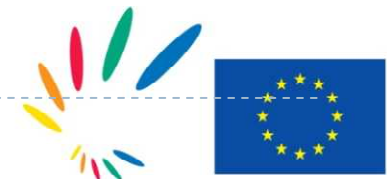
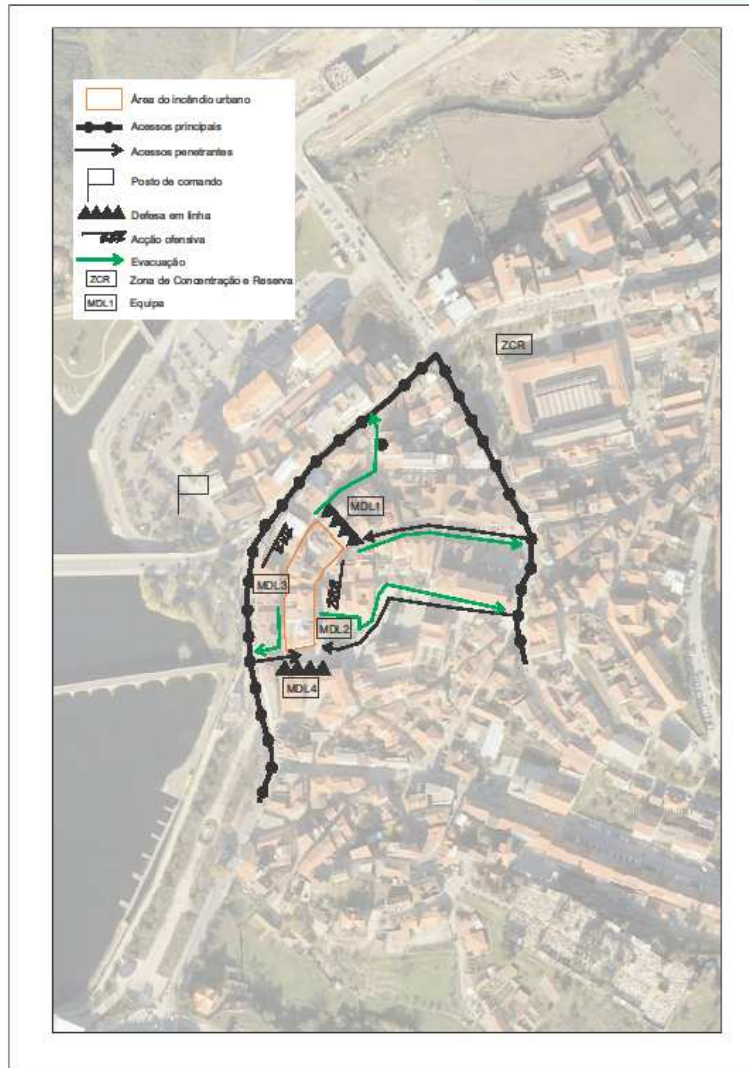
6. Which instruments did you use to identify capabilities/risk measures?

- Flood in the camping site



6. Which instruments did you see to identify capabilities/risk measures?

- Urban fire in several buildings in the historical area of the city of Mirandela





6. Which instruments did you use to identify capabilities/risk measures?

- The municipal emergency plan contains a list of operations (theoretical simulation exercise) and capabilities are identified
- These theoretical simulation exercises let us know the necessary capabilities to solve the different situations

